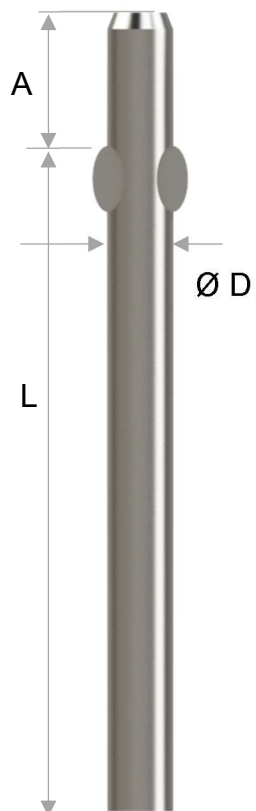


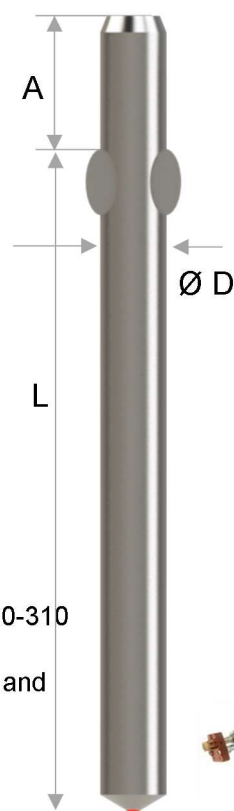
P-PIN SYSTEM

IPH .10- 100 - 020 - 310
TYPE Ø LENGTH L LENGTH A ALLOY



IPH
Welding with
electrode

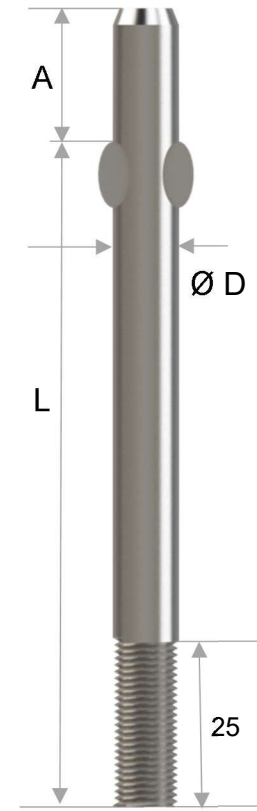
IPS AB .10- 100 - 020 - 310
TYPE Aluminium Ball Ø LENGTH L LENGTH A ALLOY



Options : IPS

IPH AB 10-150-020-310
Aluminium Ball
(required for dia 8 and
more)
With ferrule

IPT .10- 100 - 020 - 310
TYPE Ø LENGTH L LENGTH A ALLOY



IPT
To be
screwed

www.anchorsforrefractory.com
contact@anchorsforrefractory.com



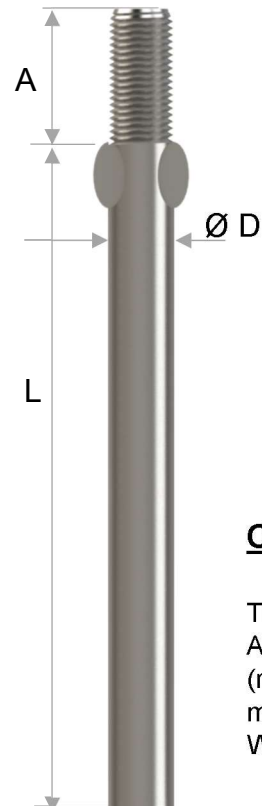
Tél : + 33 3 66 50 00 33 / +33 7 85 06 29 49
PA Vallée de l'Escaut - rue de la crête - 59264 ONNAING-France

These informations are general informative indications. Many particular conditions of use and exceptions exist in industrial applications, many parameters can influence the technical choices. The informations mentioned in this technical data sheet, in particular regarding the features and the performances of the products, is provided for guidance purposes only and is liable to change depending of the conditions of use and environment. Information mentioned can be modified without notice. The company ANCHORS will in no circumstances be held liable for the consequences of any improper use. If you want some suggestions from us, applicable for your specific application and/or environment, please contact us.

P-PIN SYSTEM

TPH .10- 100 - 020 - 310

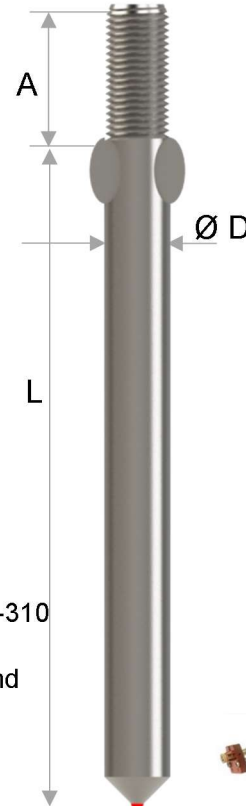
TYPE Ø LENGTH L LENGTH A ALLOY



TPH
Welding with
electrode

TPS AB .10- 100 - 020 - 310

TYPE Aluminium Ø LENGTH L LENGTH A ALLOY
Ball

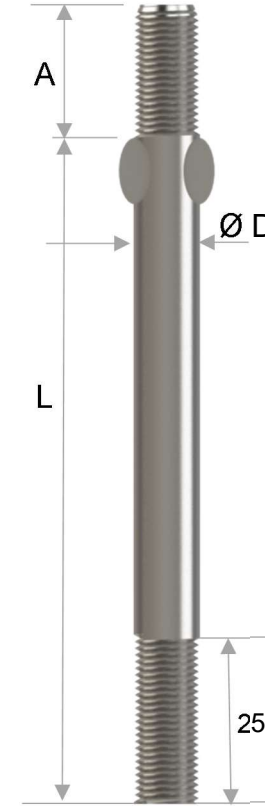


Options : TPS

TPS AB 10-150-020-310
Aluminium Ball
(required for dia 8 and
more)
With ferrule

TPT .10- 100 - 020 - 310

TYPE Ø LENGTH L LENGTH A ALLOY



IPT
To be
screwed

www.anchorsforrefractory.com
contact@anchorsforrefractory.com

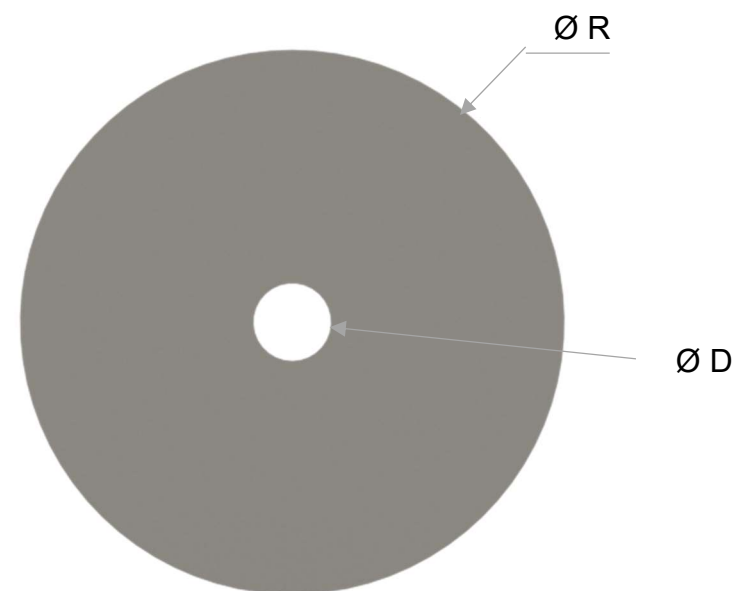
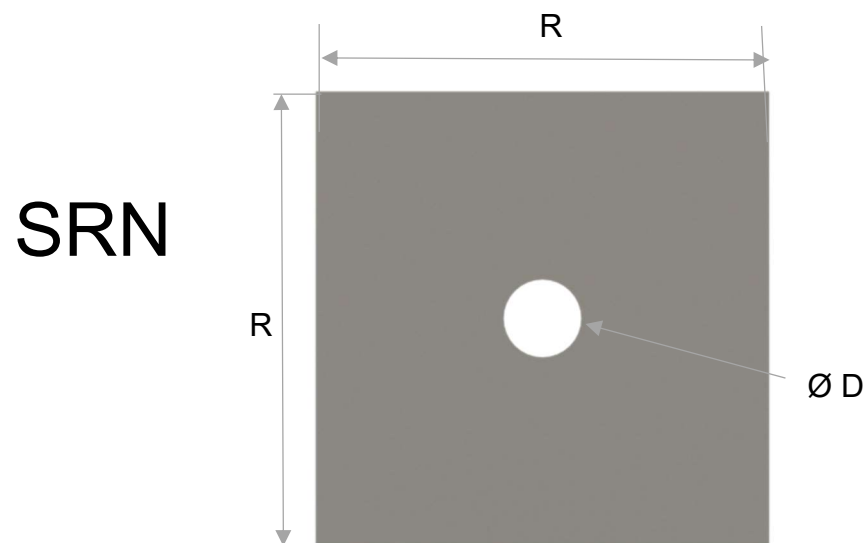


Tél : + 33 3 66 50 00 33 / +33 7 85 06 29 49
PA Vallée de l'Escaut - rue de la crête - 59264 ONNAING-France

These informations are general informative indications. Many particular conditions of use and exceptions exist in industrial applications, many parameters can influence the technical choices. The informations mentioned in this technical data sheet, in particular regarding the features and the performances of the products, is provided for guidance purposes only and is liable to change depending of the conditions of use and environment. Information mentioned can be modified without notice. The company ANCHORS will in no circumstances be held liable for the consequences of any improper use. If you want some suggestions from us, applicable for your specific application and/or environment, please contact us.

TO BE USED WITH IPH, IPS, IPT

Page D8-01



SRN .60-50 (2) - 8- 304					
TYPE	R	R	THK S	Ø D	ALLOY



RIN .60 (2) - 8- 304					
TYPE	R	THK S	Ø D	ALLOY	

www.anchorsforrefractory.com
contact@anchorsforrefractory.com



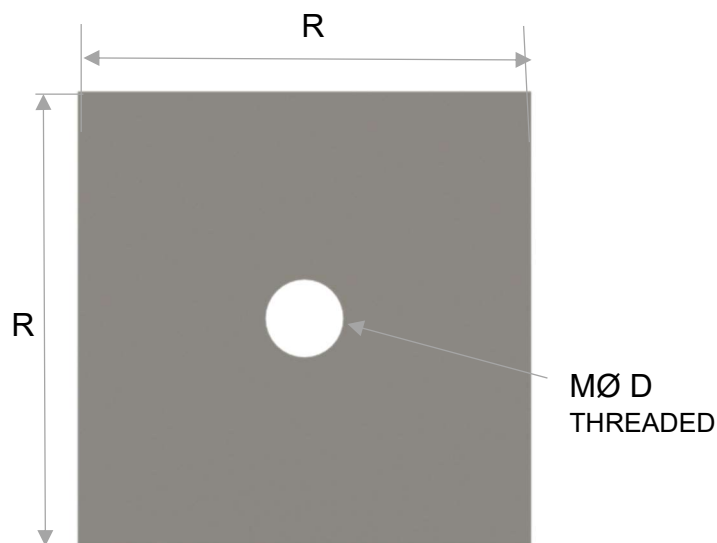
Tél : + 33 3 66 50 00 33 / +33 7 85 06 29 49
 PA Vallée de l'Escaut - rue de la crête - 59264 ONNAING-France

These informations are general informative indications. Many particular conditions of use and exceptions exist in industrial applications, many parameters can influence the technical choices. The informations mentioned in this technical data sheet, in particular regarding the features and the performances of the products, is provided for guidance purposes only and is liable to change depending of the conditions of use and environment. Information mentioned can be modified without notice. The company ANCHORS will in no circumstances be held liable for the consequences of any improper use. If you want some suggestions from us, applicable for your specific application and/or environment, please contact us.

TO BE USED WITH TPH, TPS, TPT

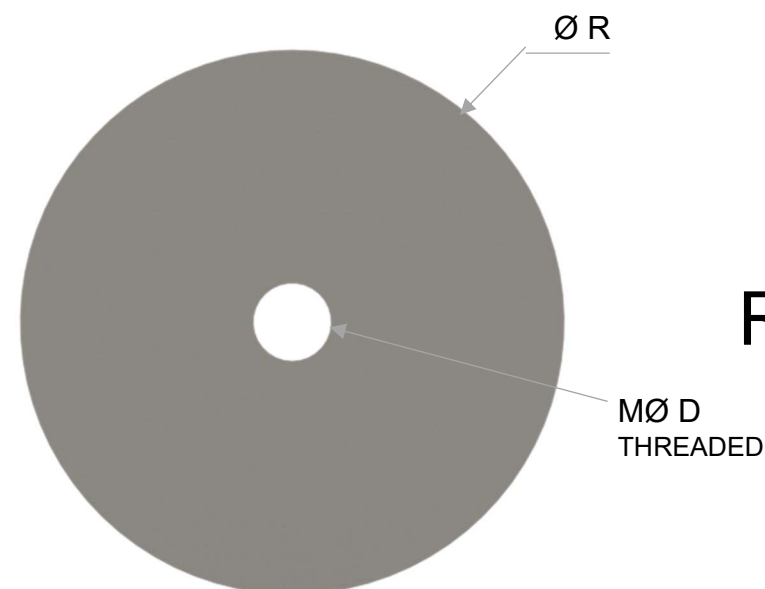
Page D8-01

SRN



SRN	.60-50	(2)	-	M8-	304	
TYPE	R	R	THK	S	MØ D	ALLOY

RIN



RIN	.60	(2)	-	M8-	304
TYPE	R	THK	S	MØ D	ALLOY

www.anchorsforrefractory.com
contact@anchorsforrefractory.com



Tél : + 33 3 66 50 00 33 / +33 7 85 06 29 49
PA Vallée de l'Escaut - rue de la crête - 59264 ONNAING-France

These informations are general informative indications. Many particular conditions of use and exceptions exist in industrial applications, many parameters can influence the technical choices. The informations mentioned in this technical data sheet, in particular regarding the features and the performances of the products, is provided for guidance purposes only and is liable to change depending of the conditions of use and environment. Information mentioned can be modified without notice. The company ANCHORS will in no circumstances be held liable for the consequences of any improper use. If you want some suggestions from us, applicable for your specific application and/or environment, please contact us.