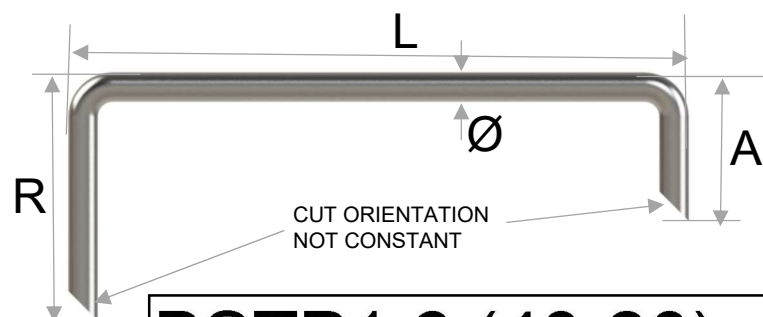




**BSTP2.8 (50-30) -230- 304**

TYPE	Ø	LENGTH R A	LENGTH L	ALLOY
BSTP2.8	(50-30)	-230	304	

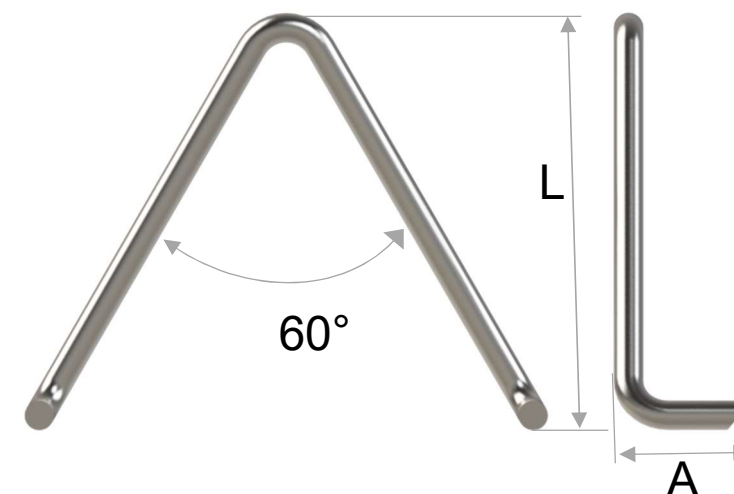


**BSTP1.6 (40-20) -150- 310**

TYPE	Ø	LENGTH R A	LENGTH L	ALLOY
BSTP1.6	(40-20)	-150	310	

Anchors are manufactured with a DIN EN 10278 (DIN 671) cold drawn wire, by robots using hydraulic tools.  
That allows minimizing bend marking and avoids micro cracks

### ANCHORING 2 BRICKS



**BSTP3.6 -100-25 (60) - 310**

TYPE	Ø	LENGTH L	LENGTH A	ANGLE	ALLOY
BSTP3.6	-100-25	(60)	310		

[www.anchorsforrefractory.com](http://www.anchorsforrefractory.com)  
[contact@anchorsforrefractory.com](mailto:contact@anchorsforrefractory.com)

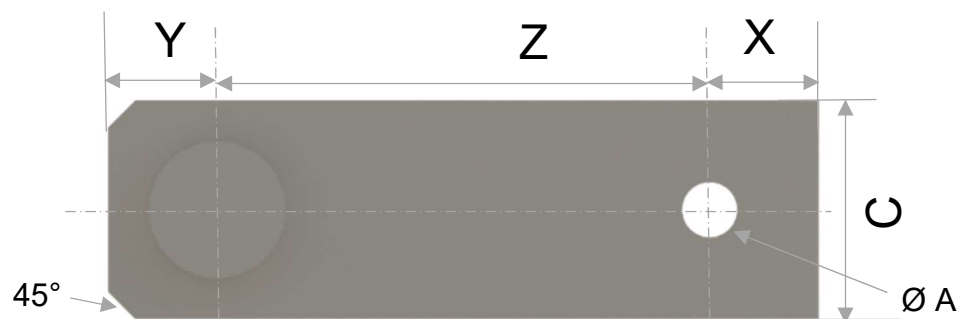
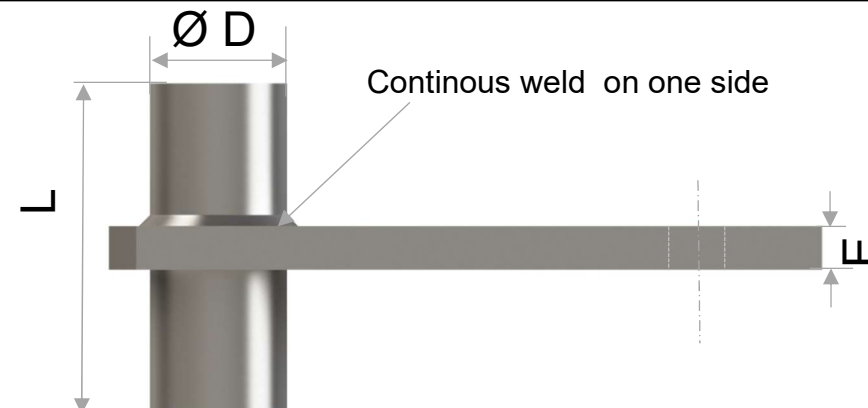
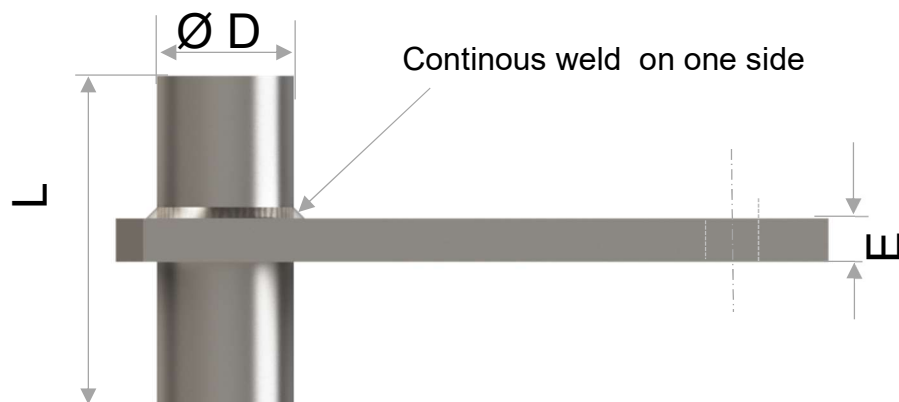


Tél : + 33 3 66 50 00 33 / +33 7 85 06 29 49  
PA Vallée de l'Escaut - rue de la crête - 59264 ONNAING-France

These informations are general informative indications. Many particular conditions of use and exceptions exist in industrial applications, many parameters can influence the technical choices. The informations mentioned in this technical data sheet, in particular regarding the features and the performances of the products, is provided for guidance purposes only and is liable to change depending of the conditions of use and environment. Information mentioned can be modified without notice. The company ANCHORS will in no circumstances be held liable for the consequences of any improper use. If you want some suggestions from us, applicable for your specific application and/or environment, please contact us.

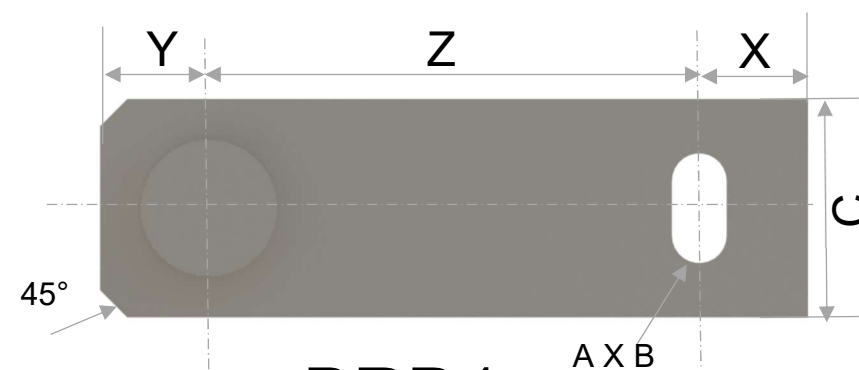
**BRD1. 50 / 5 - 60 / 25 - 25 / 120 / 25 (10X20)- 310**

TYPE	LENGTH C	THK E	LENGTH L	Ø D	LENGTH X	LENGTH Z	LENGTH Y	Ø X LENGTH A B	ALLOY
BRD1	50	5	60	25	25	120	25	(10X20)	310



**BRD1. 50 / 5 - 60 / 25 - 20 / 120 / 20 (10)- 310**

TYPE	LENGTH C	THK E	LENGTH L	Ø D	LENGTH X	LENGTH Z	LENGTH Y	Ø A	ALLOY
BRD1	50	5	60	25	20	120	20	(10)	310



**BRD1**

CONTINUOUS WELD SIDE

www.anchorsforrefractory.com  
contact@anchorsforrefractory.com



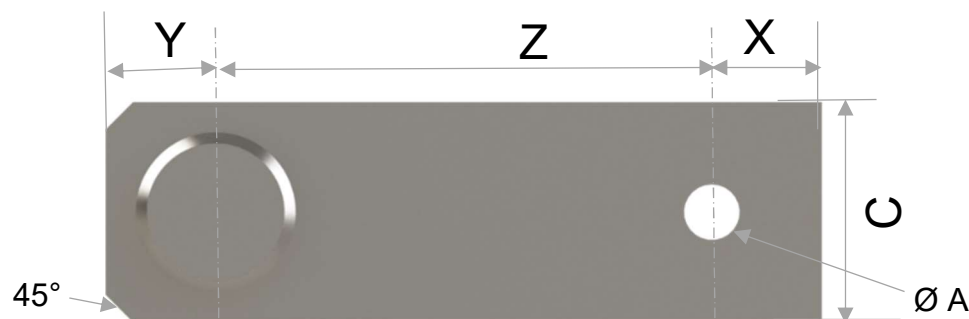
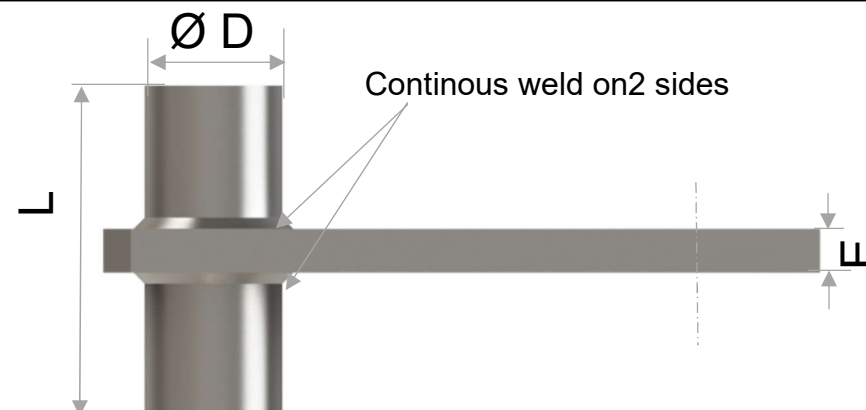
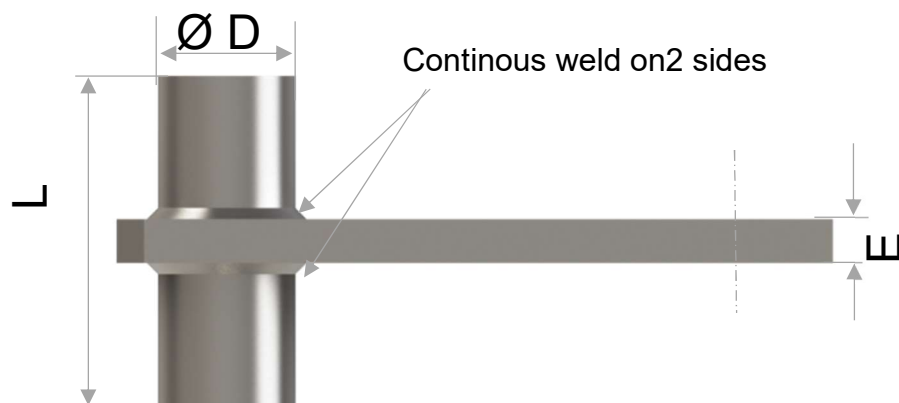
Tél : + 33 3 66 50 00 33 / +33 7 85 06 29 49

PA Vallée de l'Escaut - rue de la crête - 59264 ONNAING-France

These informations are general informative indications. Many particular conditions of use and exceptions exist in industrial applications, many parameters can influence the technical choices. The informations mentioned in this technical data sheet, in particular regarding the features and the performances of the products, is provided for guidance purposes only and is liable to change depending of the conditions of use and environment. Information mentioned can be modified without notice. The company ANCHORS will in no circumstances be held liable for the consequences of any improper use. If you want some suggestions from us, applicable for your specific application and/or environment, please contact us.

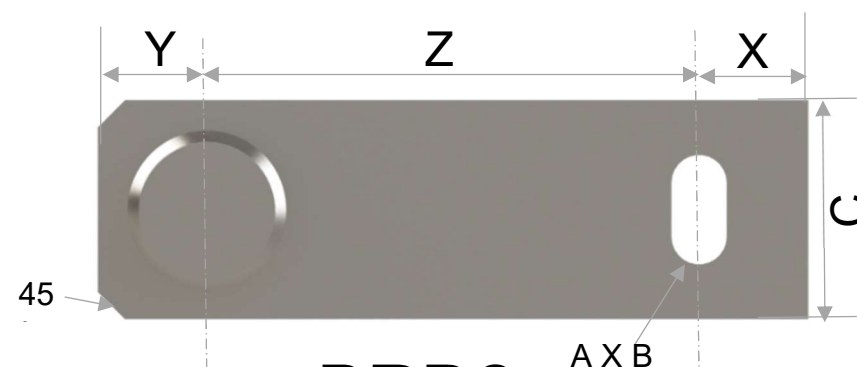
BRD2. 50 / 5 - 60 / 25 - 25 / 120 / 25 (10X20)- 310

TYPE	LENGTH C	THK E	LENGTH L	Ø D	LENGTH X	LENGTH Z	LENGTH Y	Ø X A B	LENGTH	ALLOY
BRD2. 50 / 5 - 60 / 25 - 25 / 120 / 25 (10X20)- 310	50	5	60	25	25	120	25	10 X 20		310



BRD2. 50 / 5 - 60 / 25 - 20 / 120 / 20 (10)- 310

TYPE	LENGTH C	THK E	LENGTH L	Ø D	LENGTH X	LENGTH Z	LENGTH Y	Ø A	ALLOY
BRD2. 50 / 5 - 60 / 25 - 20 / 120 / 20 (10)- 310	50	5	60	25	20	120	20	10	310



BRD2

CONTINUOUS WELD ON 2 SIDES

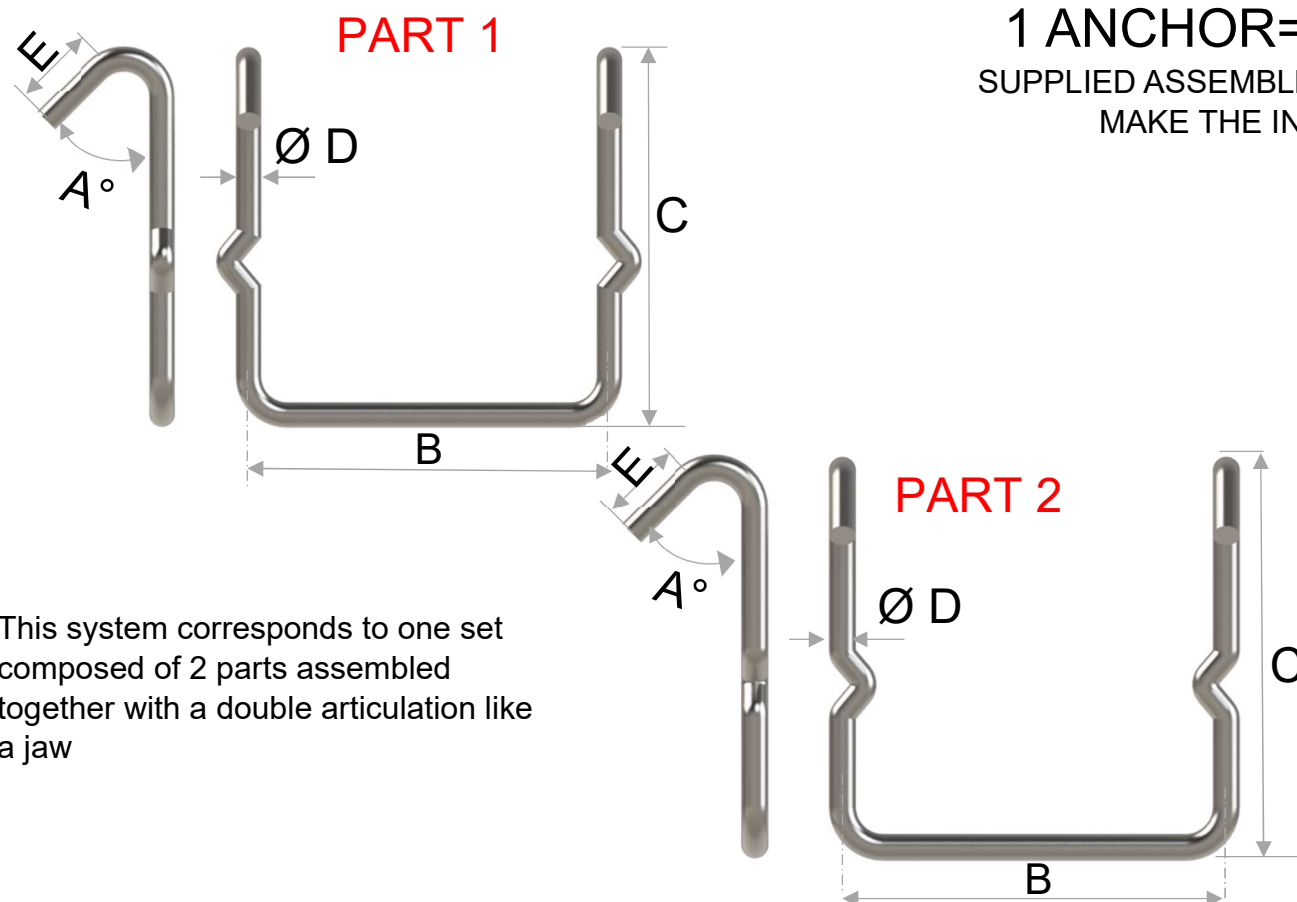
www.anchorsforrefractory.com  
contact@anchorsforrefractory.com



Tél : + 33 3 66 50 00 33 / +33 7 85 06 29 49

PA Vallée de l'Escaut - rue de la crête - 59264 ONNAING-France

These informations are general informative indications. Many particular conditions of use and exceptions exist in industrial applications, many parameters can influence the technical choices. The informations mentioned in this technical data sheet, in particular regarding the features and the performances of the products, is provided for guidance purposes only and is liable to change depending of the conditions of use and environment. Information mentioned can be modified without notice. The company ANCHORS will in no circumstances be held liable for the consequences of any improper use. If you want some suggestions from us, applicable for your specific application and/or environment, please contact us.



1 ANCHOR= 1 part 1+1 part 2  
 SUPPLIED ASSEMBLED TOGETHER IN ORDER TO  
 MAKE THE INSTALLATION EASIER



**RSA. 8 (45) -140 / 135 / 30- 310**

TYPE    Ø    Ange A    LENGTH B    LENGTH C    LENGTH E    ALLOY

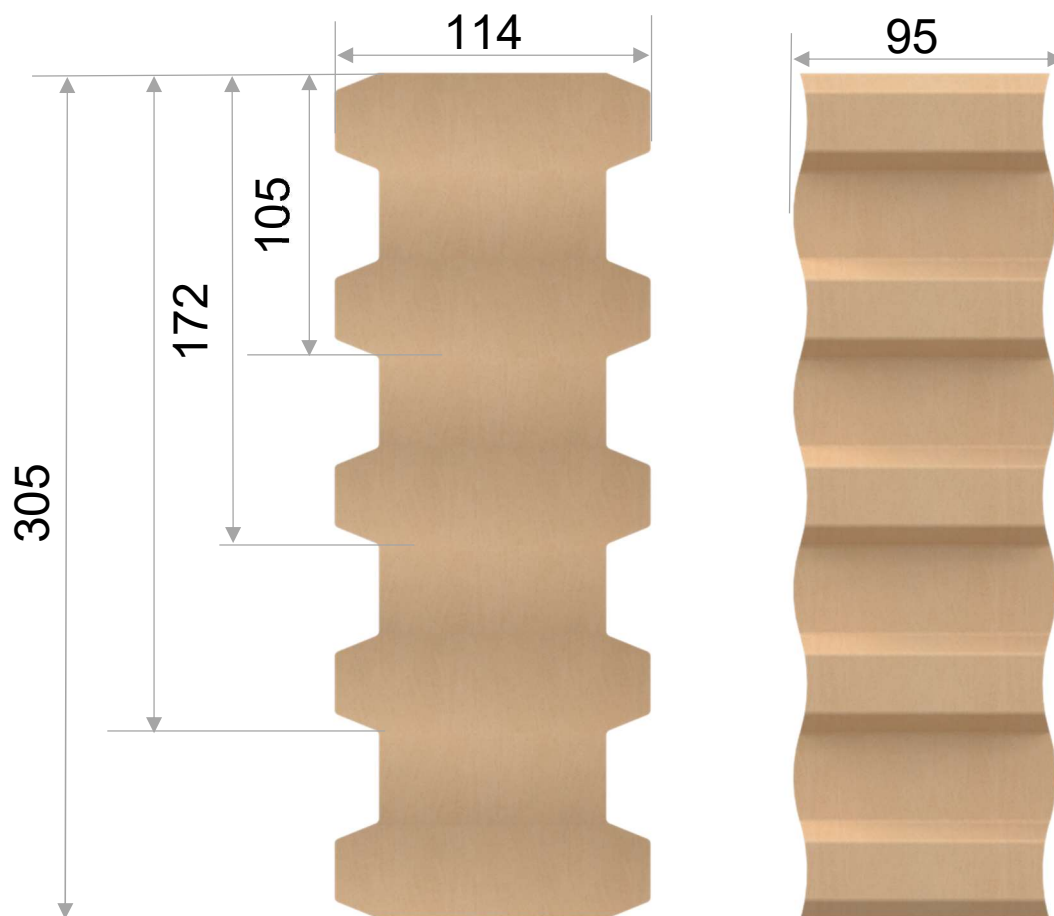
Anchors are manufactured with a DIN EN 10278 (DIN 671) cold drawn wire, by robots using hydraulic tools.  
 That allows minimizing bend marking and avoids micro cracks

[www.anchorsforrefractory.com](http://www.anchorsforrefractory.com)  
[contact@anchorsforrefractory.com](mailto:contact@anchorsforrefractory.com)



Tél : + 33 3 66 50 00 33 / +33 7 85 06 29 49  
 PA Vallée de l'Escaut - rue de la crête - 59264 ONNAING-France

These informations are general informative indications. Many particular conditions of use and exceptions exist in industrial applications, many parameters can influence the technical choices. The informations mentioned in this technical data sheet, in particular regarding the features and the performances of the products, is provided for guidance purposes only and is liable to change depending of the conditions of use and environment. Information mentioned can be modified without notice. The company ANCHORS will in no circumstances be held liable for the consequences of any improper use. If you want some suggestions from us, applicable for your specific application and/or environment, please contact us.



**ANC 305 - 57**

TYPE

% AL2O3



**Higher alumina content  
On request**

If requested, length can be shortened on site by the refractory installer with an appropriate sawing machine ( clipper type) .

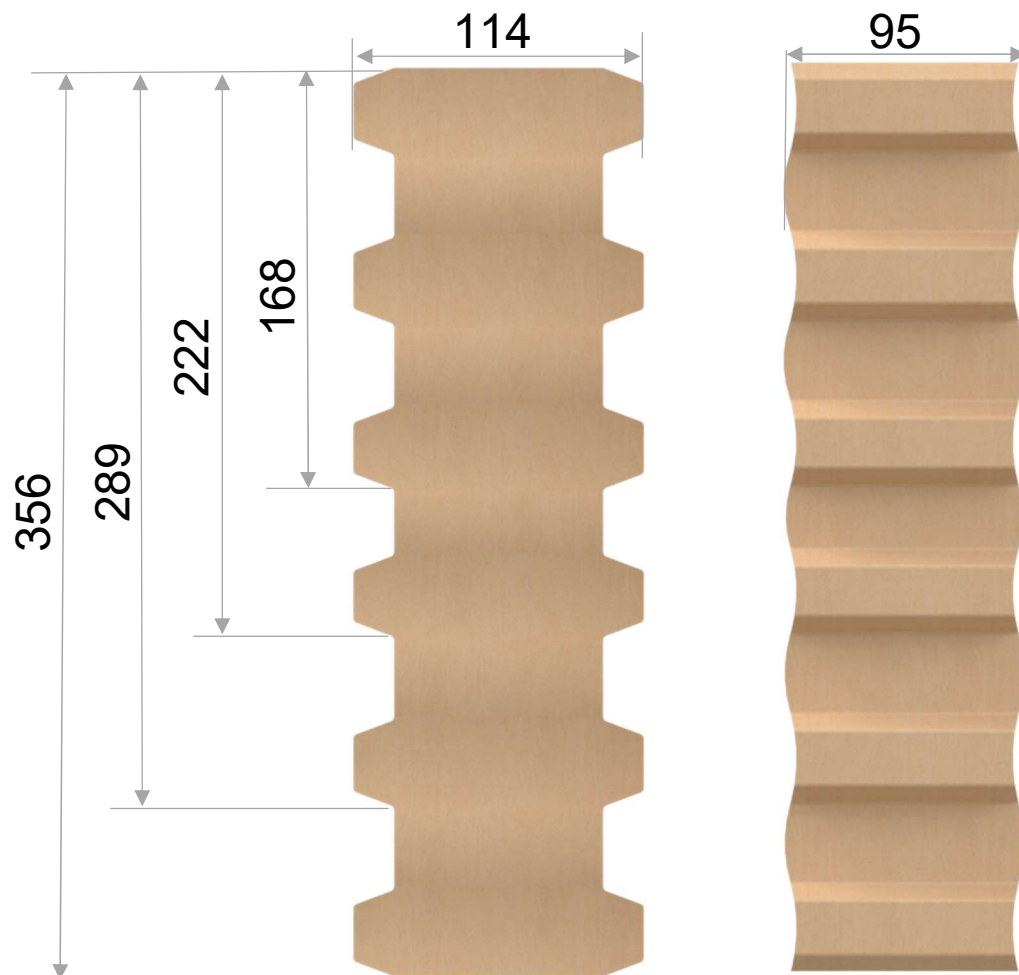
Main component : andalousite 57 % Al<sub>2</sub>O<sub>3</sub>  
Max temperature : 1550°C

[www.anchorsforrefractory.com](http://www.anchorsforrefractory.com)  
[contact@anchorsforrefractory.com](mailto:contact@anchorsforrefractory.com)



Tél : + 33 3 66 50 00 33 / +33 7 85 06 29 49  
PA Vallée de l'Escaut - rue de la crête - 59264 ONNAING-France

These informations are general informative indications. Many particular conditions of use and exceptions exist in industrial applications, many parameters can influence the technical choices. The informations mentioned in this technical data sheet, in particular regarding the features and the performances of the products, is provided for guidance purposes only and is liable to change depending of the conditions of use and environment. Information mentioned can be modified without notice. The company ANCHORS will in no circumstances be held liable for the consequences of any improper use. If you want some suggestions from us, applicable for your specific application and/or environment, please contact us.



**ANC 356 - 57**

TYPE % AL2O3



**Higher alumina content  
On request**

If requested, length can be shortened on site by the refractory installer with an appropriate sawing machine ( clipper type ) .

Main component : andalousite 57 % Al<sub>2</sub>O<sub>3</sub>

Max temperature : 1550°C

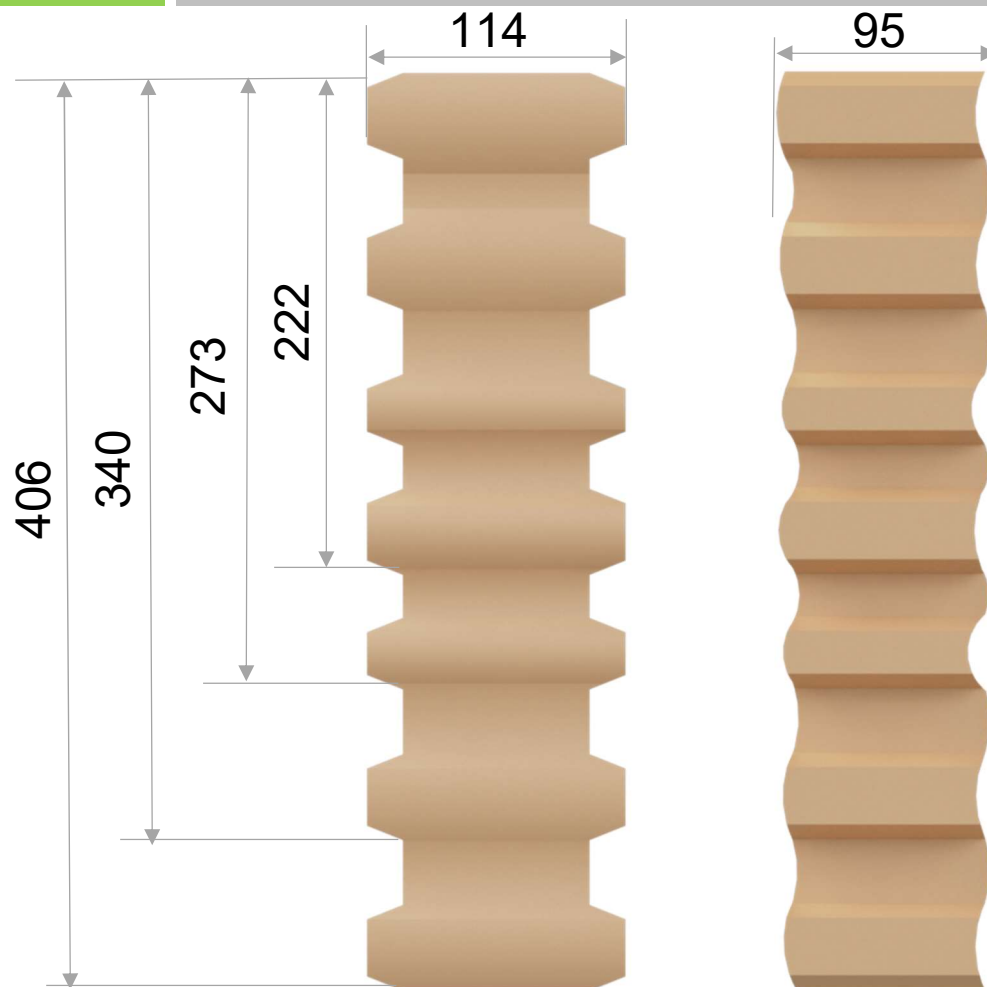
[www.anchorsforrefractory.com](http://www.anchorsforrefractory.com)  
[contact@anchorsforrefractory.com](mailto:contact@anchorsforrefractory.com)



Tél : + 33 3 66 50 00 33 / +33 7 85 06 29 49

PA Vallée de l'Escaut - rue de la crête - 59264 ONNAING-France

These informations are general informative indications. Many particular conditions of use and exceptions exist in industrial applications, many parameters can influence the technical choices. The informations mentioned in this technical data sheet, in particular regarding the features and the performances of the products, is provided for guidance purposes only and is liable to change depending of the conditions of use and environment. Information mentioned can be modified without notice. The company ANCHORS will in no circumstances be held liable for the consequences of any improper use. If you want some suggestions from us, applicable for your specific application and/or environment, please contact us.



**ANC 406 - 57**

TYPE

% AL2O3



**Higher alumina content  
On request**

If requested, length can be shortened on site by the refractory installer with an appropriate sawing machine ( clipper type) .

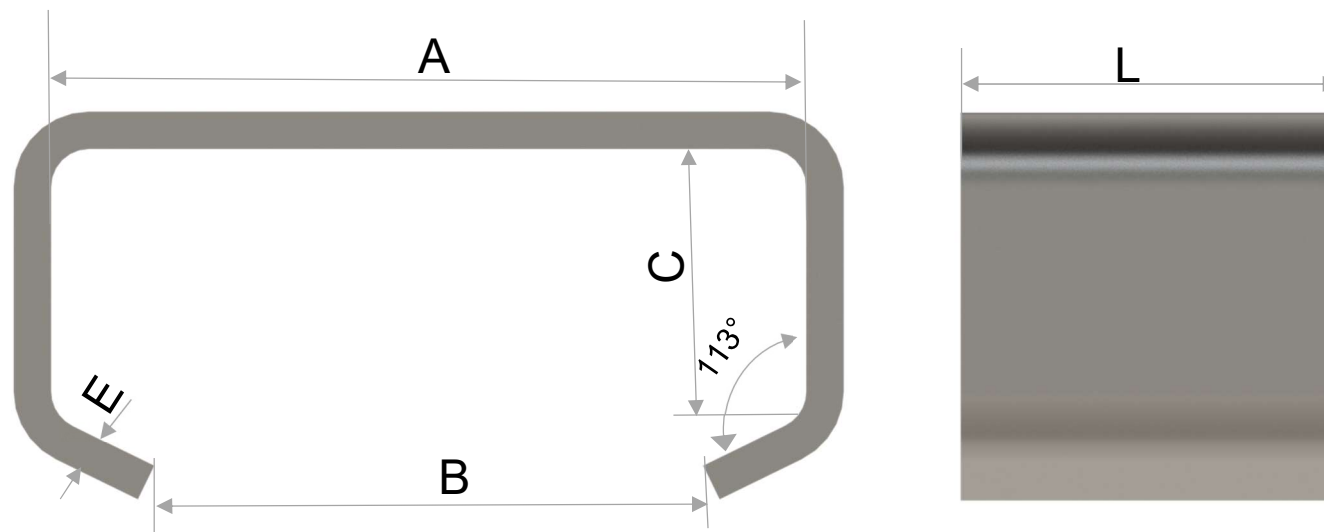
Main component : andalousite 57 % Al<sub>2</sub>O<sub>3</sub>  
Max temperature : 1550°C

[www.anchorsforrefractory.com](http://www.anchorsforrefractory.com)  
[contact@anchorsforrefractory.com](mailto:contact@anchorsforrefractory.com)



Tél : + 33 3 66 50 00 33 / +33 7 85 06 29 49  
PA Vallée de l'Escaut - rue de la crête - 59264 ONNAING-France

These informations are general informative indications. Many particular conditions of use and exceptions exist in industrial applications, many parameters can influence the technical choices. The informations mentioned in this technical data sheet, in particular regarding the features and the performances of the products, is provided for guidance purposes only and is liable to change depending of the conditions of use and environment. Information mentioned can be modified without notice. The company ANCHORS will in no circumstances be held liable for the consequences of any improper use. If you want some suggestions from us, applicable for your specific application and/or environment, please contact us.



**C-CLIP.120-89-42 ( 60 / 6) - 310**

TYPE	A	B	C	L	E	ALLOY
------	---	---	---	---	---	-------



BRICK ANC  
SEE PAGES  
B4-01 / B4-02 / B4-03

[www.anchorsforrefractory.com](http://www.anchorsforrefractory.com)  
[contact@anchorsforrefractory.com](mailto:contact@anchorsforrefractory.com)



Tél : + 33 3 66 50 00 33 / +33 7 85 06 29 49  
PA Vallée de l'Escaut - rue de la crête - 59264 ONNAING-France

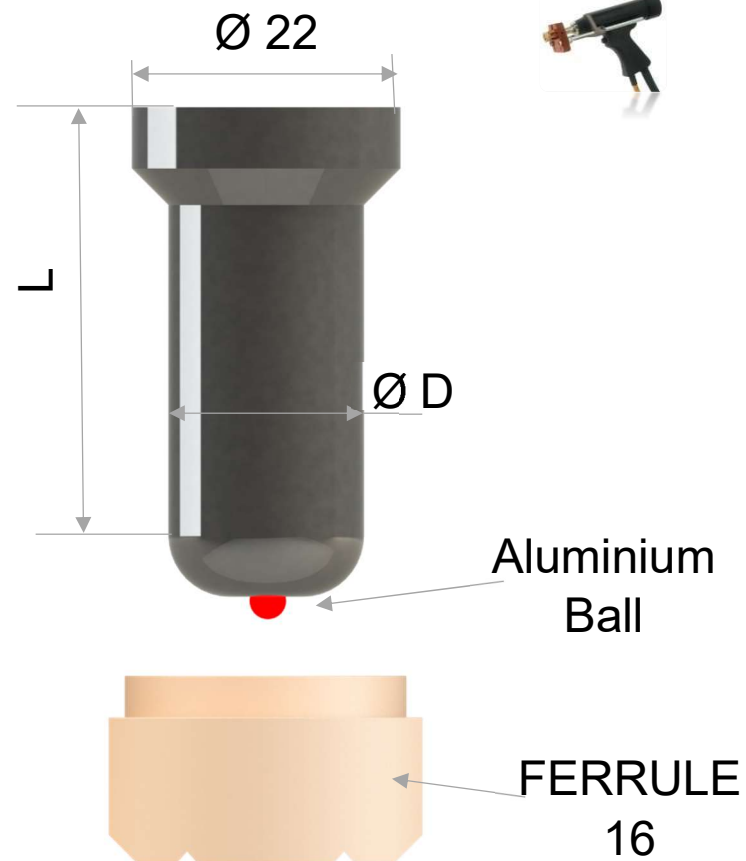
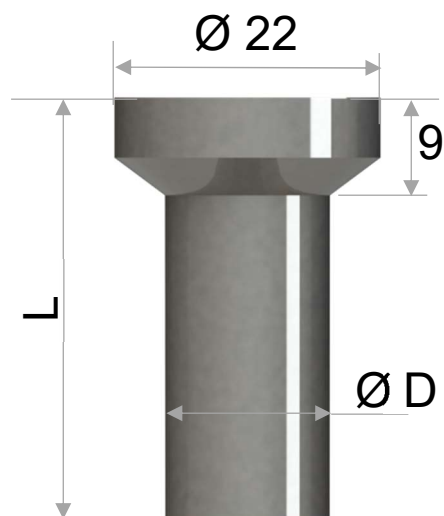
These informations are general informative indications. Many particular conditions of use and exceptions exist in industrial applications, many parameters can influence the technical choices. The informations mentioned in this technical data sheet, in particular regarding the features and the performances of the products, is provided for guidance purposes only and is liable to change depending of the conditions of use and environment. Information mentioned can be modified without notice. The company ANCHORS will in no circumstances be held liable for the consequences of any improper use. If you want some suggestions from us, applicable for your specific application and/or environment, please contact us.



ELECTRODE WELDING

## ANCHOR FOR TILES IN INCINERATORS

STUD WELDING



RI.16 - 035 - CS

TYPE Ø D L ALLOY

RIS.16 - 035 - CS - AB

TYPE Ø D L ALLOY ALU BALL

www.anchorsforrefractory.com  
contact@anchorsforrefractory.com



Tél : + 33 3 66 50 00 33 / +33 7 85 06 29 49

PA Vallée de l'Escaut - rue de la crête - 59264 ONNAING-France

These informations are general informative indications. Many particular conditions of use and exceptions exist in industrial applications, many parameters can influence the technical choices. The informations mentioned in this technical data sheet, in particular regarding the features and the performances of the products, is provided for guidance purposes only and is liable to change depending of the conditions of use and environment. Information mentioned can be modified without notice. The company ANCHORS will in no circumstances be held liable for the consequences of any improper use. If you want some suggestions from us, applicable for your specific application and/or environment, please contact us.